

FP4 SPS

Submersible well pumps



The SPS version of the FP4 series is designed to operate in the harshest sandy conditions, retaining the standard series features with the peculiarity of having impellers locked onto the shaft with oversized clearances to allow sand passage with reduced abrasion on wear parts.

The non-return valve is not included as standard. Special spacers in steel and ceramic fully protect the shaft. Shaft alignment is ensured by an oversized microcast steel support with a cast iron-rubber bushing and ceramic bushings.

Hydraulic performance is reduced compared to the standard pump to ensure greater resistance in the extreme conditions for which it is designed

Construction features

Suction and delivery outlet	stainless steel AISI 304
External jacket	stainless steel AISI 304
Impellers	POM-C
Diffusers	POM-C, stainless steel AISI 304 and ceramic
Support bush with sleeve	EPDM + stainless steel AISI 316L with ceramic coating
Shaft	stainless steel AISI 431B
Coupling	stainless steel AISI 316L
Quantity of sand in the water	800-1000 g/m ³
Max liquid temperature	max 40 °C
Number of startups/hr	10
Non-return valve	not included



FP4 SPS C

50 Hz - 2850 rpm					Q										
TYPE	P2		WITH FMO4 MOTOR		I/min	0	30	35	40	45	50	55	60	65	70
			1- 230V	3- 400V	I/sec	0	0,5	0,58	0,67	0,75	0,83	0,92	1,00	1,08	1,17
	HP	Kw	A		m ³ /h	0	1,8	2,1	2,4	2,7	3,0	3,3	3,6	3,9	4,2
FP4 C005/06 SPS	0,5	0,37	3,6	1,8	H (m)	39	35	33	31	29	26	23	19	16	12
FP4 C007/09 SPS	0,75	0,55	4,6	2,0		58	52	49	46	43	39	34	29	23	17
FP4 C010/12 SPS	1	0,75	6,0	2,5		75	67	64	60	55	50	44	37	30	22
FP4 C015/18 SPS	1,5	1,1	8,4	3,4		112	100	95	89	83	74	65	56	45	33

FP4 SPS D

50 Hz - 2850 rpm					Q								
TYPE	P2		WITH FMO4 MOTOR		I/min	0	45	50	55	60	65	70	80
			1- 230V	3- 400V	I/sec	0	0,75	0,83	0,92	1,0	1,08	1,17	1,33
	HP	Kw	A		m ³ /h	0	2,7	3,0	3,3	3,6	3,9	4,2	4,8
FP4 D010/10 SPS	1	0,75	6,0	2,5	H (m)	63	53	50	47	44	39	35	24
FP4 D015/15 SPS	1,5	1,1	8,4	3,4		94	79	75	70	65	59	52	36
FP4 D020/20 SPS	2	1,5	10,8	4,8		121	103	97	91	84	76	67	47

FP4 SPS E

50 Hz - 2850 rpm					Q										
TYPE	P2		WITH FMO4 MOTOR		I/min	0	50	55	60	65	70	80	90	100	110
			1- 230V	3- 400V	I/sec	0	0,83	0,92	1,0	1,08	1,17	1,33	1,5	1,67	1,83
	HP	Kw	A		m ³ /h	0	3,0	3,3	3,6	3,9	4,2	4,8	5,4	6,0	6,6
FP4 E015/12 SPS	1,5	1,1	8,4	3,4	H (m)	78	69	67	64	61	58	49	38	28	16
FP4 E020/16 SPS	2	1,5	10,8	4,8		103	92	89	86	82	77	65	51	37	21
FP4 E030/24 SPS	3	2,2	15,2	6,1		155	138	134	128	122	115	97	76	55	32

FP4 SPS F

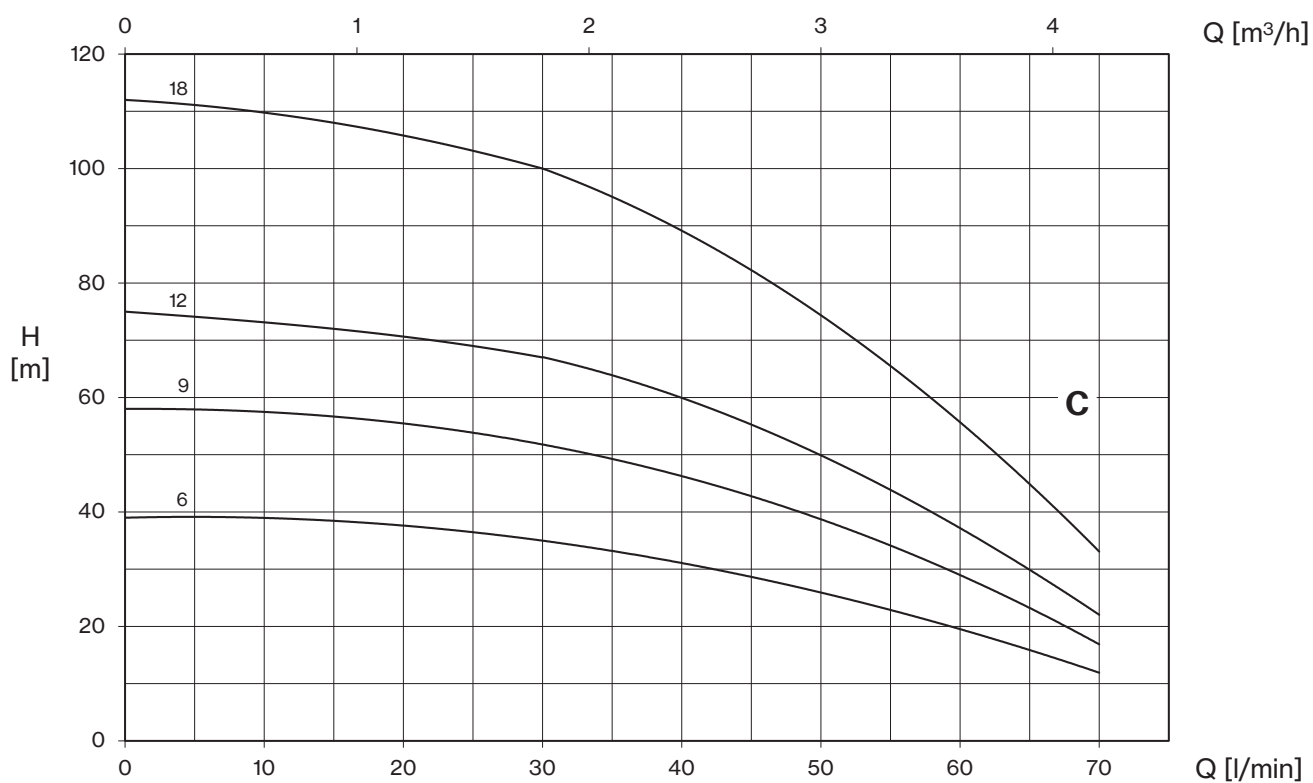
50 Hz - 2850 rpm					Q								
TYPE	P2		WITH FMO4 MOTOR		I/min	0	80	90	100	110	125	150	175
			1- 230V	3- 400V	I/sec	0	1,33	1,50	1,67	1,83	2,08	2,5	2,92
	HP	Kw	A		m ³ /h	0	4,8	5,4	6	6,6	7,5	9	10,5
FP4 F015/09 SPS	1,5	1,1	8,4	3,4	H (m)	60	47	45	43	40	35	25	13
FP4 F020/12 SPS	2	1,5	10,8	4,8		79	61	59	55	52	46	32	17
FP4 F030/17 SPS	3	2,2	15,2	6,1		111	87	83	78	74	65	46	24
FP4 F040/23 SPS	4	3	20,4	7,1		150	117	112	106	99	88	61	33

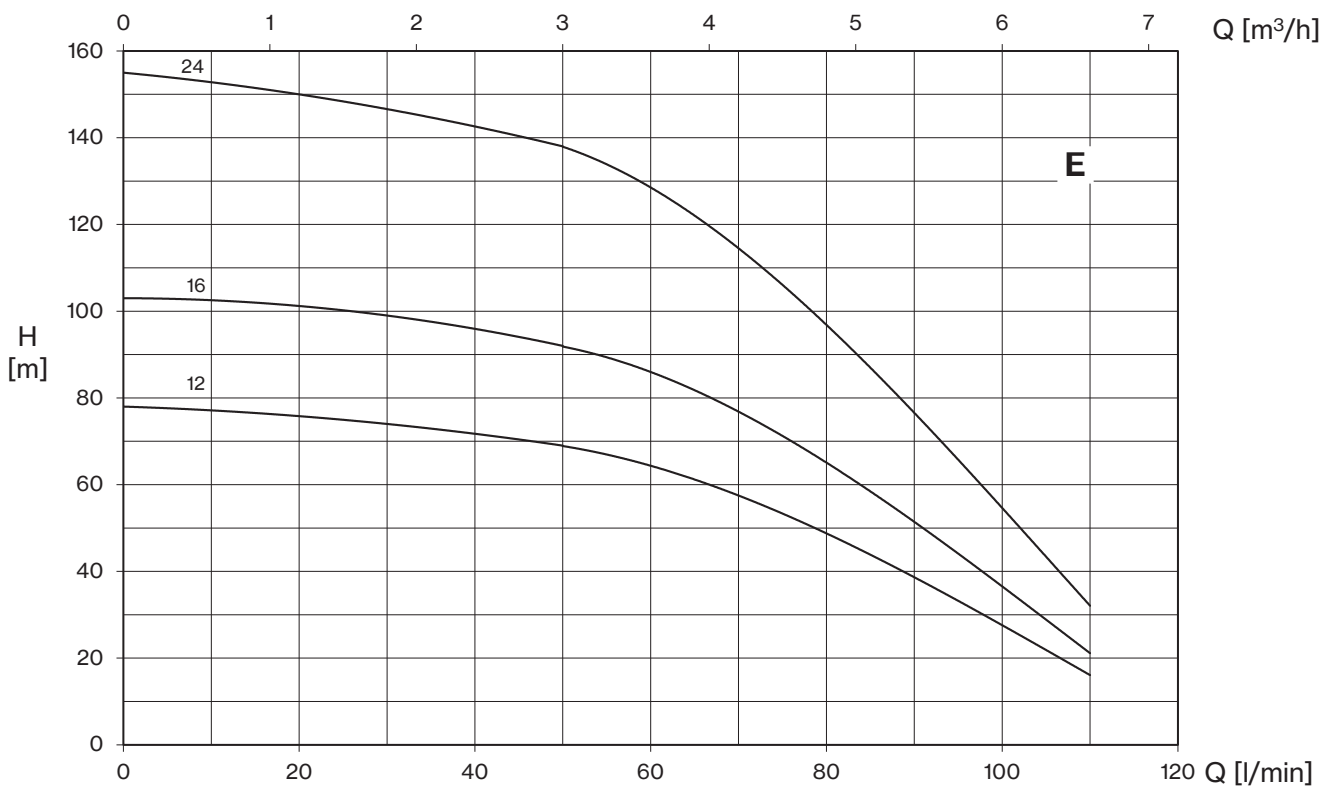
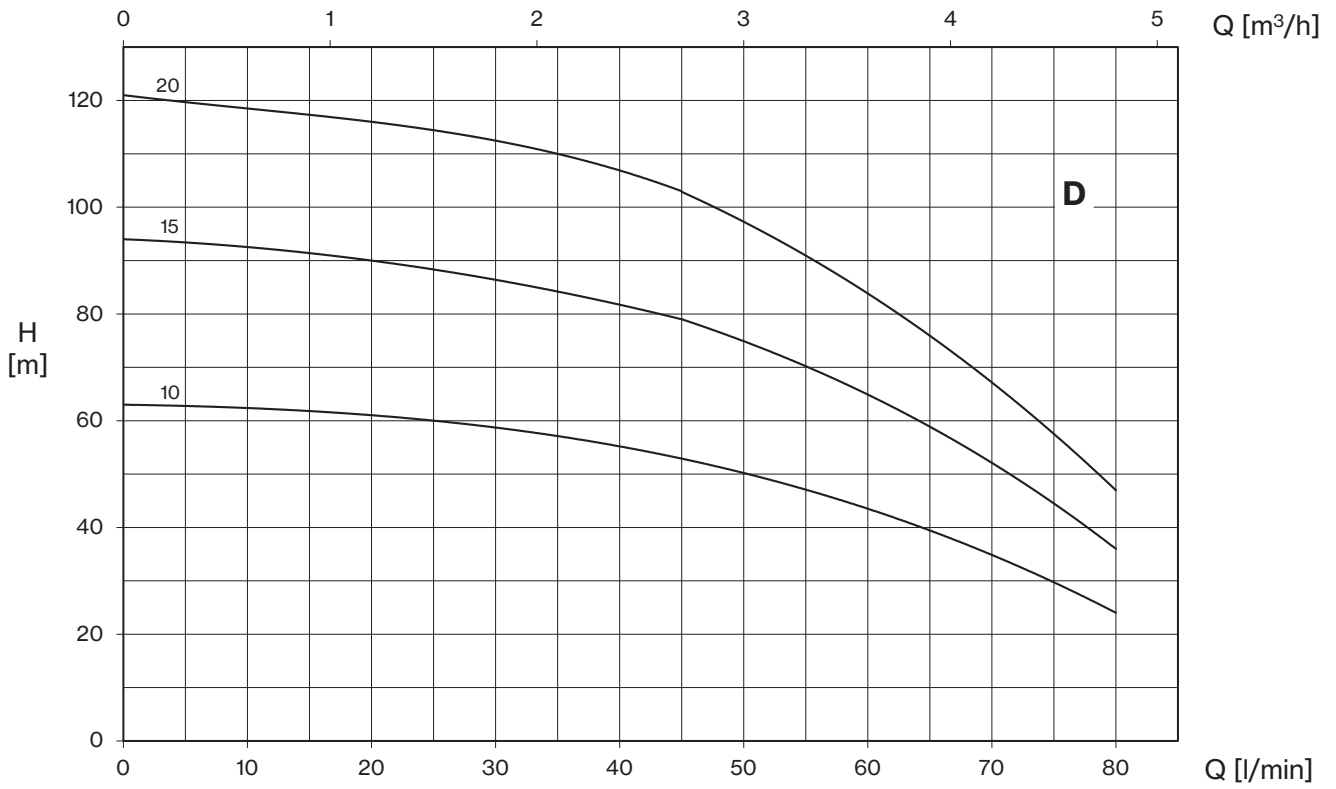


FP4 SPS

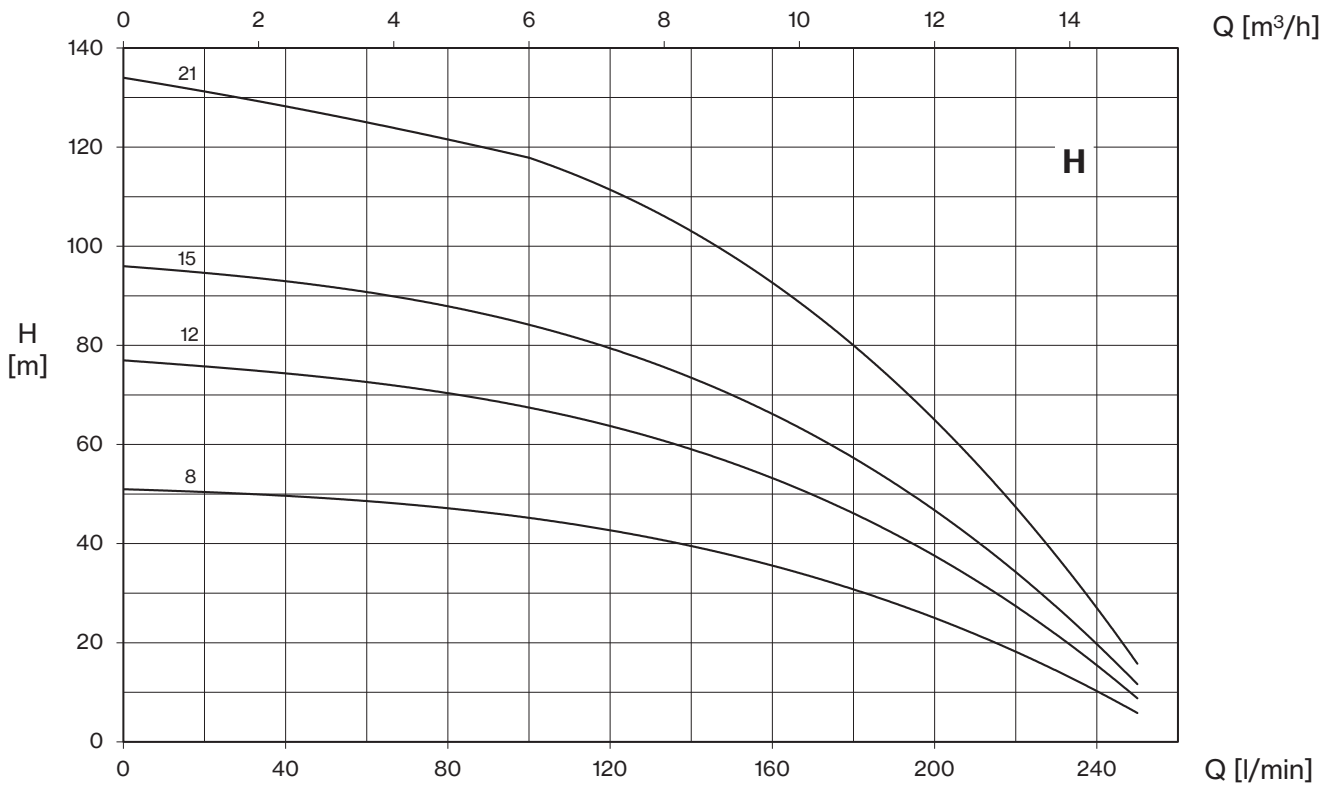
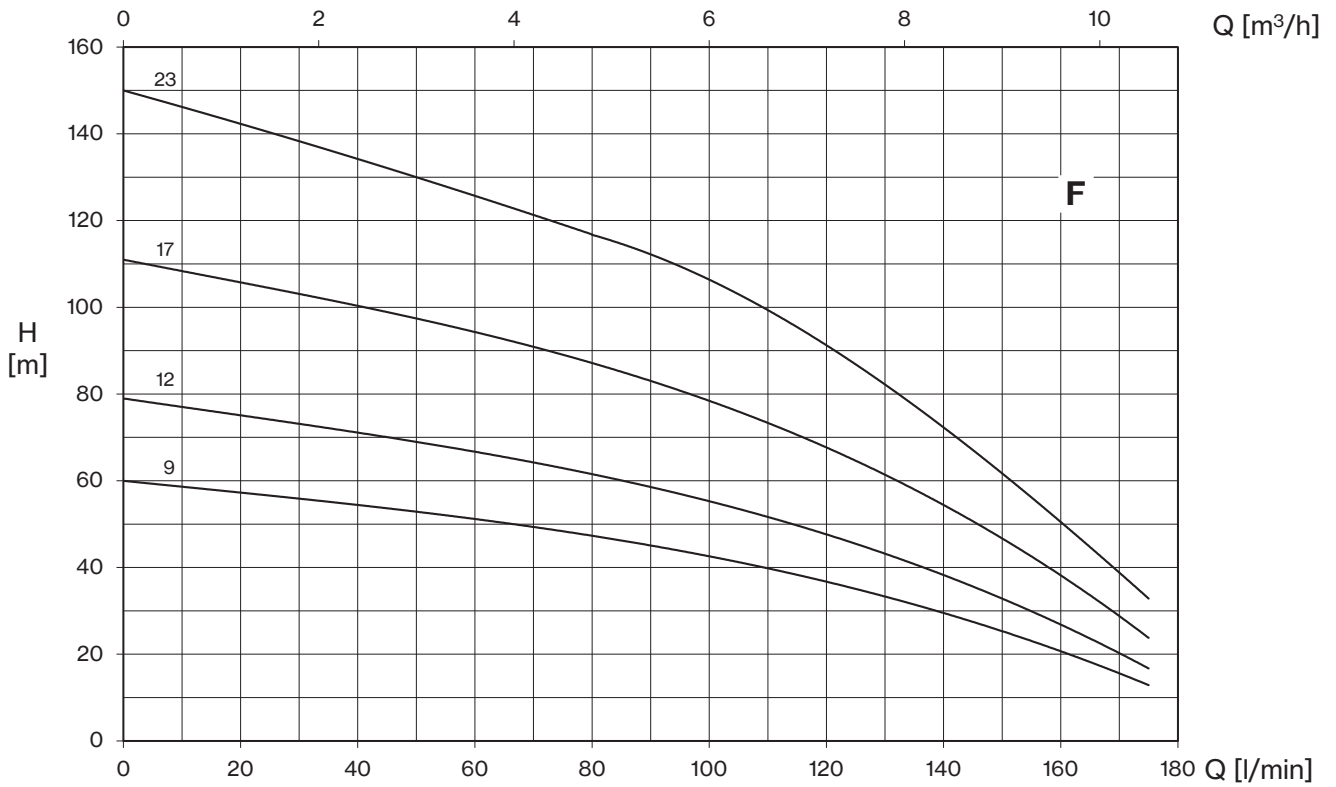
FP4 SPS H

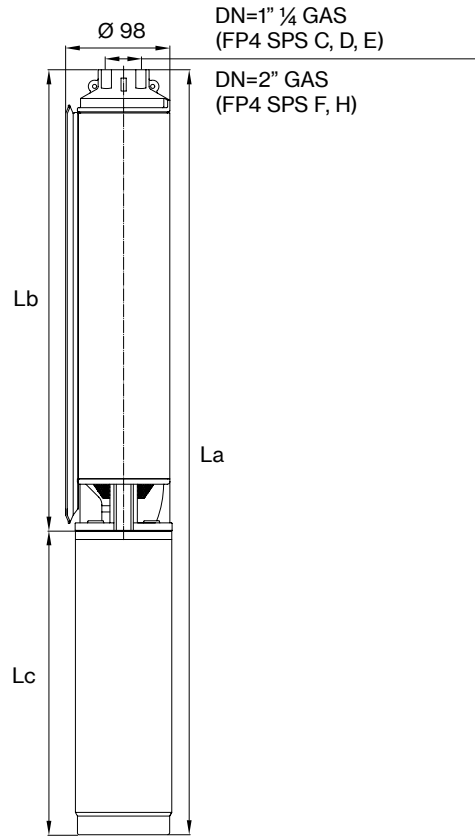
50 Hz - 2850 rpm					Q									
TYPE	P2		WITH FMO4 MOTOR		l/min	0	100	110	125	150	175	200	225	250
			1~ 230V	3~ 400V	l/sec	0	1,67	1,83	2,08	2,5	2,92	3,33	3,75	4,17
	HP	Kw	A		m³/h	0	6	6,6	7,5	9	10,5	12	13,5	15
FP4 H020/08 SPS	2	1,5	10,8	4,8	H (m)	51	45	44	42	38	32	25	16	6
FP4 H030/12 SPS	3	2,2	15,2	6,1		77	67	66	63	56	48	38	24	9
FP4 H040/15 SPS	4	3	20,4	7,1		96	84	82	78	70	60	47	30	12
FP4 H055/21 SPS	5,5	4	25	9,2		134	118	115	109	98	84	65	42	16





FP4 SPS





FP4 SPS C

TYPE		ST	DIMENSIONS (mm)					WEIGHT (kg)				
1~	3~		La (1~)	La (3~)	Lb	Lc (1~)	Lc (3~)	La (1~)	La (3~)	Lb	Lc (1~)	Lc (3~)
FP4 C005/06 SPS	FP4 C005/06 SPS	6	610	610	300	310	310	9,6	9,6	3,1	6,5	6,5
FP4 C007/09 SPS	FP4 C007/09 SPS	9	690	690	360	330	330	10,9	10,9	3,7	7,2	7,2
FP4 C010/12 SPS	FP4 C010/12 SPS	12	775	775	420	355	355	12,8	12,8	4,3	8,5	8,5
FP4 C015/18 SPS	FP4 C015/18 SPS	18	935	910	540	395	370	15,8	15	5,6	10,2	9,4

FP4 SPS D

TYPE		ST	DIMENSIONS (mm)					WEIGHT (kg)				
1~	3~		La (1~)	La (3~)	Lb	Lc (1~)	Lc (3~)	La (1~)	La (3~)	Lb	Lc (1~)	Lc (3~)
FP4 D010/10 SPS	FP4 D010/10 SPS	10	735	735	380	355	355	12,4	12,4	3,9	8,5	8,5
FP4 D015/15 SPS	FP4 D015/15 SPS	15	875	850	480	395	370	15,2	14,4	5	10,2	9,4
FP4 D020/20 SPS	FP4 D020/20 SPS	20	1015	975	580	435	395	17,7	16,2	6	11,7	10,2

FP4 SPS E

TYPE		ST	DIMENSIONS (mm)					WEIGHT (kg)				
1~	3~		La (1~)	La (3~)	Lb	Lc (1~)	Lc (3~)	La (1~)	La (3~)	Lb	Lc (1~)	Lc (3~)
FP4 E015/12 SPS	FP4 E015/12 SPS	12	835	810	440	395	370	14,7	13,9	4,5	10,2	9,4
FP4 E020/16 SPS	FP4 E020/16 SPS	16	965	925	530	435	395	17,1	15,6	5,4	11,7	10,2
FP4 E030/24 SPS	FP4 E030/24 SPS	24	1200	1145	710	490	435	22,2	18,8	7,1	15,1	11,7



FP4 SPS

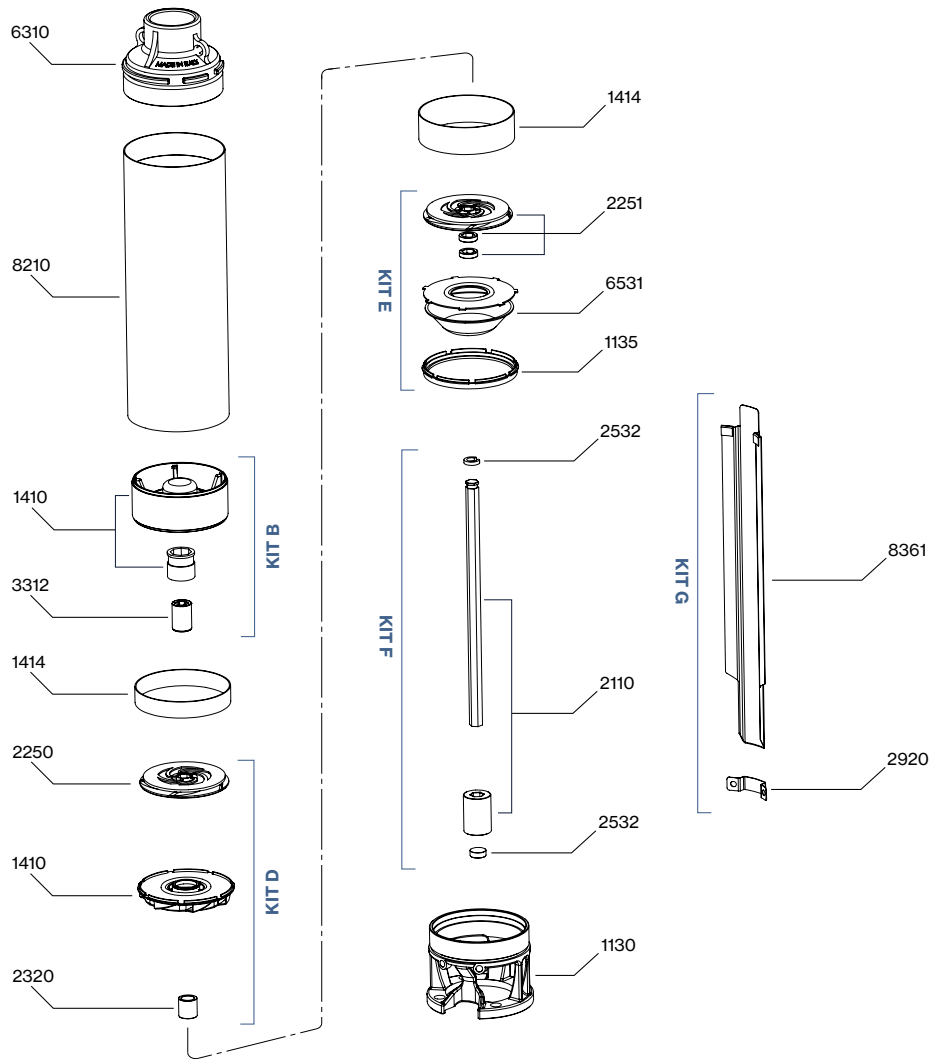
FP4 SPS F

TYPE		ST	DIMENSIONS (mm)					WEIGHT (kg)				
1-	3-		La (1-)	La (3-)	Lb	Lc (1-)	Lc (3-)	La (1-)	La (3-)	Lb	Lc (1-)	Lc (3-)
FP4 F015/09 SPS	FP4 F015/09 SPS	9	905	880	510	395	370	15,2	14,4	5	10,2	9,4
FP4 F020/12 SPS	FP4 F020/12 SPS	12	1055	1015	620	435	395	17,7	16,2	6	11,7	10,2
FP4 F030/17 SPS	FP4 F030/17 SPS	17	1300	1245	810	490	435	22,8	19,4	7,7	15,1	11,7
FP4 F040/23 SPS	FP4 F040/23 SPS	23	1565	1510	1060	505	450	26,8	22	9,8	17	12,2

FP4 SPS H

TYPE		ST	DIMENSIONS (mm)					WEIGHT (kg)				
1-	3-		La (1-)	La (3-)	Lb	Lc (1-)	Lc (3-)	La (1-)	La (3-)	Lb	Lc (1-)	Lc (3-)
FP4 H020/08 SPS	FP4 H020/08 SPS	8	935	895	500	435	395	16,6	15,1	4,9	11,7	10,2
FP4 H030/12 SPS	FP4 H030/12 SPS	12	1150	1095	660	490	435	21,4	18	6,3	15,1	11,7
FP4 H040/15 SPS	FP4 H040/15 SPS	15	1285	1230	780	505	450	24,4	19,6	7,4	17	12,2
FP4 H055/21 SPS	FP4 H055/21 SPS	21	1850	1555	1050	800	505	38,7	24,9	9,7	29	15,2





N. CODE	KIT	DESCRIPTION	MATERIAL
1410	KIT B <i>upper support</i>	SUPPORT BUSH WITH SLEEVE	STAINLESS STEEL AISI 304 + EPDM
3312		BEARING BUSHING	CERAMIC-COATED STAINLESS STEEL AISI 316L
2531		SEEGER	POM-C
1410	KIT D <i>stage</i>	COMPLETE DIFFUSER WITH DISC	POM-C + AL ₂ O ₃ CERAMIC + STAINLESS STEEL AISI 304
2250		IMPELLER	POM-C
2320		STAINLESS STEEL SHIM	STAINLESS STEEL AISI 304
1135	KIT E <i>first stage</i>	CENTERING RING	POM-C
6531		DISC AND GRID	STAINLESS STEEL AISI 304
2251		FIRST IMPELLER WITH SPACERS	POM-C
2110	KIT F <i>shaft with coupling</i>	SHAFT WITH COUPLING	STAINLESS STEEL AISI 431B
2532		SEEGER WITH SHOCK SUPPORT	POM-C
2920	KIT G <i>cable cover</i>	SCREWS AND CLAMP	STAINLESS STEEL AISI 304
8361		CABLE COVER	STAINLESS STEEL AISI 304
1130	-	SUCTION CASING	STAINLESS STEEL AISI 304
1414		SPACER PIPE	STAINLESS STEEL AISI 304
6310		VALVE BODY	STAINLESS STEEL AISI 304
8210		EXTERNAL PIPE	STAINLESS STEEL AISI 304